

## DIMENSIONAL THEORY

### Product Specifications

Pointe.  
International

#### Application

Upholstery

#### Content

Top - 100% Polyurethane (Polycarbonate Based)  
Middle – 100% Polyester Nonwoven

#### Finish

Patented, Water Based Graffiti-Free®

#### Backing

100% Polyester

#### Width

52"

#### Repeat

App. 1.25" H, 1.375" V

#### General Characteristics

Abrasion : 100,000+ double rubs (Wyzenbeek)†

Hydrolysis Resistance : 15+ weeks

- ISO1419:1995, Method C, Tropical Test

Colorfastness to Light (AATCC-16/200 hours)

Meets or exceeds all ACT Heavy Duty Performance  
Guidelines for Upholstery

#### Innovative Dimensional Faux Leather

Revolutionary padded, ultrasonic sealed process to  
achieve a three-dimensional look.

#### Flammability

CA Bulletin 117-2013, UFAC/NFPA 260-Class 1

IMO A652 (16) 8.2

#### Environmental

DMF Free, PVC/Phthalates Free, FR/Anti-Microbial Free

\*Complies with REACH, Prop 65, HHI, CAL-01350

#### Option

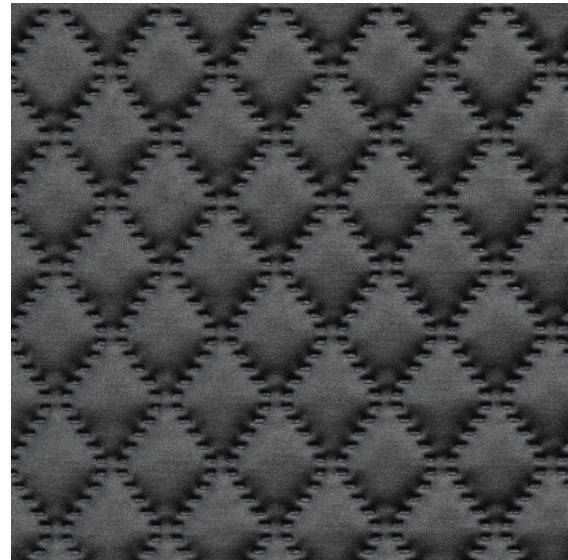
ASTM E-84 F/R Treatment

#### Maintenance\*

W/S, Bleach Cleanable (4:1)

#### Warranty

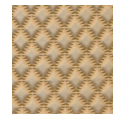
Please refer to our Terms of Sales for warranty  
information.



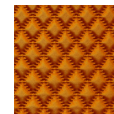
Seal



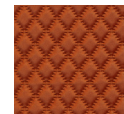
White



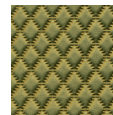
Silk



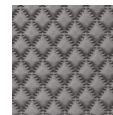
Saffron



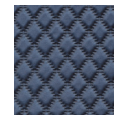
Peach Rose



Pasture



Haze



Clipper

\*While this product offers excellent protection against ink marks or difficult stains, full removal is not always guaranteed, if stains not addressed promptly.

† Multiple factors affect fabric durability and appearance retention, including end-user application and proper maintenance. Wyzenbeek results above 100,000 double rubs have not been shown to be a reliable indicator of increased fabric lifespan.